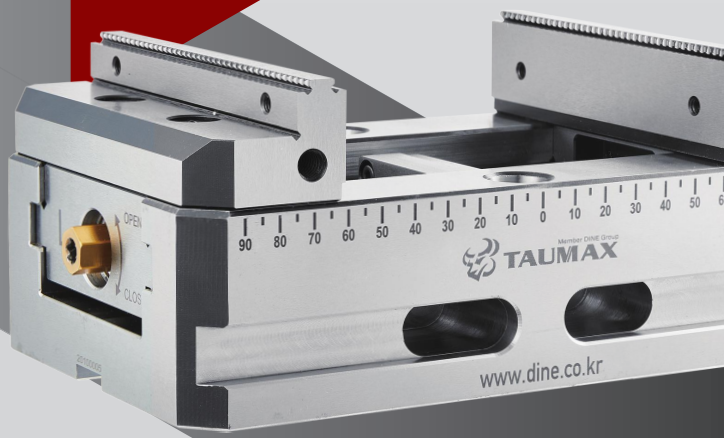




TAUMAX

NEW PRODUCT 2022





TAUMAX

NEW PRODUCT 2022



ABOUT TAUMAX

TAUMAX is mid-low market brand of DINE to challenge for new market.

As second brand, we, TAUMAX would be a pioneer to the new market with DINE's Dealerships and passionate customers presenting various types of machine, tool, peripheral machine devices and industrial products. We promise that we will be one step ahead of market to offer our best services for your satisfaction





Contents

- 01** | Tooling System
- 02** | Work Holding System
- 03** | Other Products

01

Tooling System



BT-TPM	06
BT-TXER	07
BT-TSK	08
BT-TSLA	09
BT-TFMA	10
BT-TFMC	11
BT-TFMC-L	12
BT-TNPU	13
BT-TMTA	14

- C** Internal coolant system installed.
- C** Internal coolant system **is optional**.
- C** This product does not support the internal coolant system.

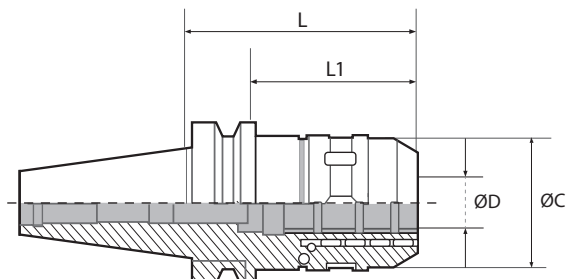
BT-TPM Milling Chuck



Shank

Shank

Coolant System



TOOLING SYSTEM

Type	Designation	ØD	L	ØC	L1		Collet	Kg.
					Min	Max		
BT30	BT30-TPM20-80	20	80	53	45	70	DC20	1.0
BT40	BT40-TPM20-90	20	90	53	45	70	DC20	1.7
	BT40-TPM32-85	32	85	70	50	76	DC32	2.0
	BT40-TPM32-105	32	105	70	50	76	DC32	2.7
BT50	BT50-TPM32-105	32	105	74	60	95	DC32	4.9
	BT50-TPM32-135	32	135	74	60	95	DC32	5.7
	BT50-TPM32-165	32	165	74	60	95	DC32	6.5

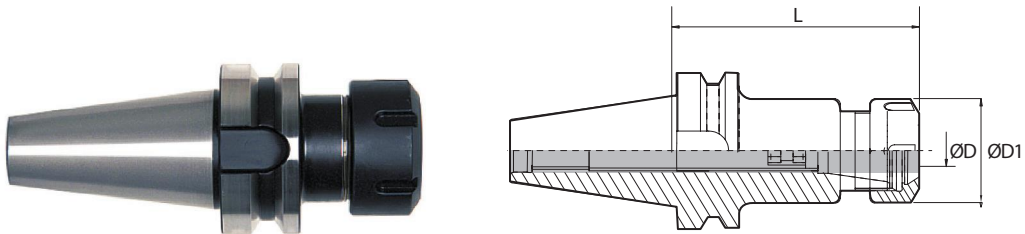
ACCESSORIES

 Spanner



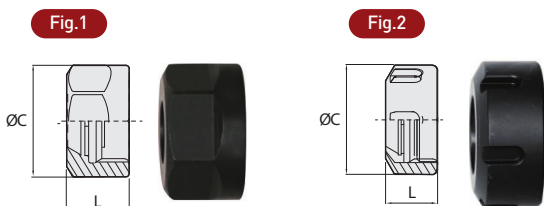
For	Designation
TPM-20	75-79
TPM-32	57-60

BT-TXER ER Collet Chuck



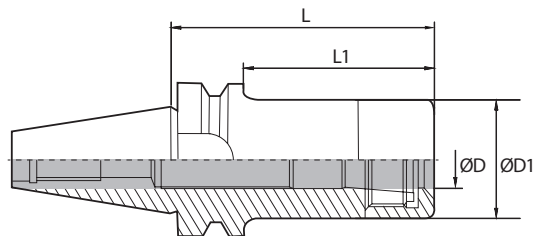
Type	Designation	ØD	ØD1	L	G	Kg	Nut	Fig	
BT30	BT30-TXER16-70	1.0-10.0	28	70	M10	0.7	ER16-DIN6499	1	
	BT30-TXER16-100	1.0-10.0	28	100	M10	0.7			
	BT30-TXER20-70	1.0-13.0	34	70	M12	0.7	ER20-DIN6499		
	BT30-TXER20-100	1.0-13.0	34	100	M12	0.9			
	BT30-TXER25-70	2.0-16.0	42	70	M12	0.8	ER25-DIN6499		2
	BT30-TXER25-100	2.0-16.0	42	100	M12	0.9			
	BT30-TXER32-70	2.0-20.0	50	70	M12	0.8	ER32-DIN6499		
BT40	BT40-TXER16-70	1.0-10.0	28	70	M10	1.2	ER16-DIN6499	1	
	BT40-TXER16-100	1.0-10.0	28	100	M10	1.3			
	BT40-TXER16-160	1.0-10.0	28	160	M10	1.5			
	BT40-TXER20-70	1.0-13.0	34	70	M12	1.2	ER20-DIN6499		
	BT40-TXER20-100	1.0-13.0	34	100	M12	1.4			
	BT40-TXER20-160	1.0-13.0	34	160	M12	1.8	ER25-DIN6499	2	
	BT40-TXER25-70	2.0-16.0	42	70	M16	1.3			
	BT40-TXER25-100	2.0-16.0	42	100	M16	1.4			
	BT40-TXER25-130	2.0-16.0	42	130	M16	1.6	ER32-DIN6499		
	BT40-TXER25-160	2.0-16.0	42	160	M16	2.0			
	BT40-TXER32-70	2.0-20.0	50	70	M22X1.5	1.4	ER32-DIN6499		
	BT40-TXER32-100	2.0-20.0	50	100	M22X1.5	1.7			
	BT40-TXER25-130	2.0-20.0	50	130	M22X1.5	2.0			
BT40-TXER32-160	2.0-20.0	50	160	M22X1.5	2.5				
BT40-TXER32-160	2.0-20.0	50	160	M22X1.5	2.5				
BT50	BT50-TXER16-100	1.0-10.0	28	100	M10	3.8	ER16-DIN6499		1
	BT50-TXER16-160	1.0-10.0	28	160	M10	4.1			
	BT50-TXER20-100	1.0-13.0	34	100	M12	3.9	ER20-DIN6499		
	BT50-TXER20-160	1.0-13.0	34	160	M12	4.5			
	BT50-TXER25-100	2.0-16.0	42	100	M16	3.9	ER25-DIN6499	2	
	BT50-TXER25-130	2.0-16.0	42	100	M16	4.2			
	BT50-TXER25-160	2.0-16.0	42	160	M16	4.6			
	BT50-TXER32-100	2.0-20.0	50	100	M22X1.5	4.1	ER32-DIN6499		
	BT50-TXER32-130	2.0-20.0	50	130	M22X1.5	4.5			
BT50-TXER32-160	2.0-20.0	50	160	M22X1.5	4.9				

NUT



Designation	ØC(mm)	L(mm)	G	Fig
ER16-DIN6499	28	17.5	M22X1.5	1
ER20-DIN6499	34	19	M25X1.5	1
ER25-DIN6499	42	20	M32X1.5	2
ER32-DIN6499	50	22.5	M40X1.5	2

BT-TSK High Speed Slim Chuck



Type	Designation	ØD	ØD1	L	L1	Collet	Step	Kg.
BT30	BT30-TSK10-60	2.0~10.0	27.5	60	30	SK10	1.0	0.9
	BT30-TSK10-90	2.0~10.0	27.5	90	60	SK10	1.0	1.0
BT40	BT40-TSK10-90	2.0~10.0	27.5	90	55	SK10	1.0	1.2
	BT40-TSK16-90	3.0~16.0	40	90	54	SK16	1.0	1.5

ACCESORIES



Collet Ejector

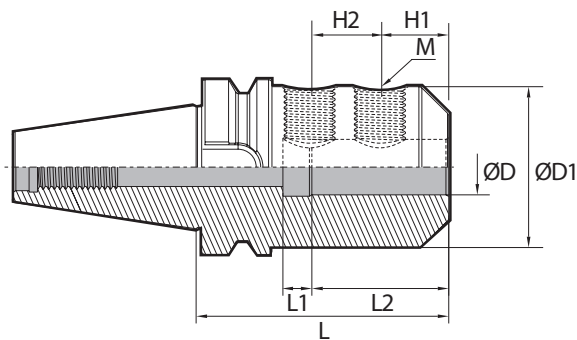
Designation	For
DSK-10CE	TSK10
DSK-16CE	TSK16



Spanner

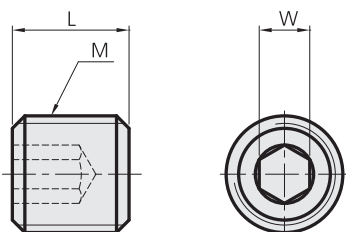
Designation	For
GSK10 Spanner	TSK10
GSK16 Spanner	TSK16

BT-TSLA Side Lock Arbor - BT



Type	Designation	ØD	ØD1	L	H1	H2	M	Kg.
BT30	BT30-TSLA20-90	20	50	90	25	20	M12	1.3
	BT30-TSLA25-90	25	50	90	25	20	M12	1.8
BT40	BT40-TSLA16-100	16	40	100	25	20	M10	1.8
	BT40-TSLA20-100	20	50	100	25	20	M12	2.2
	BT40-TSLA25-90	25	50	90	25	20	M12	2.6
	BT40-TSLA32-100	32	60	100	25	25	M14	3.8
	BT40-TSLA40-105	40	70	105	25	25	M16	3.1
	BT50-TSLA16-100	16	40	100	25	20	M10	3.8
BT50	BT50-TSLA20-100	20	50	100	25	20	M12	4.0
	BT50-TSLA25-100	25	50	100	25	20	M12	4.8
	BT50-TSLA32-105	32	60	105	25	25	M14	5.1
	BT50-TSLA40-120	40	90	120	25	25	M16	6.1
	BT50-TSLA42-120	42	90	120	25	25	M16	5.8

Set Screw

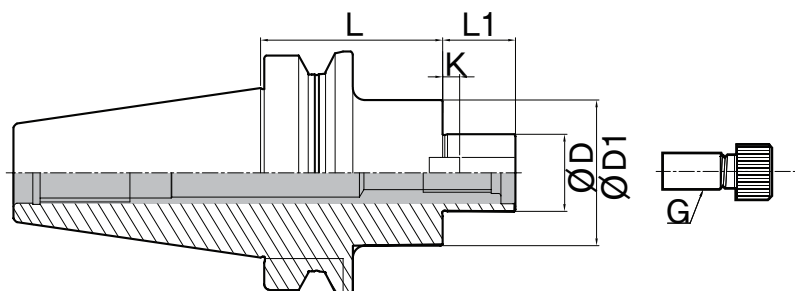


Designation	M	L	W
TSLN-M10*16	M10	16	5
TSLN-M16*16	M16	16	8
TSLN-M16*10	M16	10	8

BT-TFMA Face Milling Arbor



TOOLING SYSTEM



Type	Designation	ØD	ØD1	L	L1	K	G	Kg.
BT30	BT30-TFMA25.4-45	25.4	50	45	20	5.0	TMBA-M12	1.2
BT40	BT40-TFMA25.4-45	25.4	50	45	20	5.0	TMBA-M12	1.4
	BT40-TFMA25.4-90	25.4	50	90	20	5.0	TMBA-M12	3.1
	BT40-TFMA31.75-45	31.75	60	45	22	7.0	TMBA-M16	1.6
BT50	BT50-TFMA25.4-90	25.4	50	90	20	5.0	TMBA-M12	4.5
	BT50-TFMA25.4-150	25.4	50	150	20	5.0	TMBA-M12	5.5
	BT50-TFMA31.75-105	31.75	98	105	22	7.0	TMBA-M16	6.0
	BT50-TFMA38.1-75	38.1	50	75	25	9.0	TMBA-M20	5.5

* To activate coolant function, coolant clamp bolt must be installed and this is not included in standard product

BT-TFMC Face Milling Arbor



Fig.1

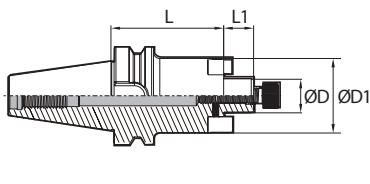
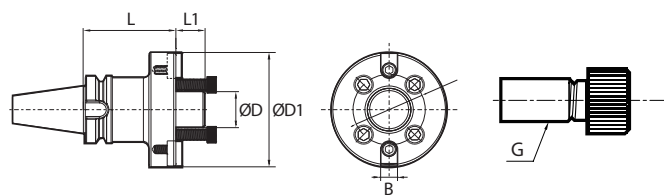


Fig.2

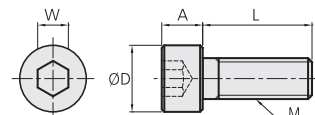


Type	Designation	ØD	ØD1	L	L1	K	G	Fig.	Kg.
BT30	BT30-TFMC16-30	16	38	30	17	8.0	TCB-M8	1	0.5
	BT30-TFMC22-45	22	48	45	18	10.0	TCB-M10	1	0.8
	BT30-TFMC27-45	27	60	45	20	12.0	TMBA-M12	1	0.9
BT40	BT40-TFMC16-35	16	38	35	17	8.0	TCB-M8	1	1.1
	BT40-TFMC22-40	22	48	40	19	10.0	TCB-M10	1	1.2
	BT40-TFMC22-100	22	48	100	19	10.0	TCB-M10	1	2.0
	BT40-TFMC27-40	27	60	40	21	12.0	TMBA-M12	1	1.3
	BT40-TFMC27-100	27	60	100	20	12.0	TMBA-M12	1	2.6
	BT40-TFMC32-50	32	78	50	24	14.0	TMBA-M16	1	2.0
BT50	BT50-TFMC16-55	16	38	55	17	8.0	TCB-M8	1	3.7
	BT50-TFMC22-55	22	48	55	19	10.0	TCB-M10	1	3.8
	BT50-TFMC27-55	27	60	55	21	12.0	TMBA-M12	1	4.1
	BT50-TFMC27-100	27	60	100	20	12.0	TMBA-M12	1	5.2
	BT50-TFMC32-55	32	78	55	24	14.0	TMBA-M16	1	4.4
	BT50-TFMC32-75	32	78	75	22	14.0	TMBA-M16	1	5.5
	BT50-TFMC32-100	32	78	100	24	14.0	TMBA-M16	1	6.0
	BT50-TFMC40-55[D160]	40	108	55	27	16.0	TMBA-M20	2	4.8

* To activate coolant function, coolant clamp bolt must be installed and this is not included in standard product

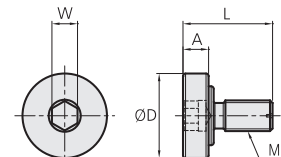
CLAMP BOLT

Designation	M	A	L	ØD(mm)	W
TCB-M8	M8	7.8	25	12.9	6
TCB-M10	M10	9.6	30	15.6	8
TCB-M12	M12	12	30	18	10



MOUNT BOLT

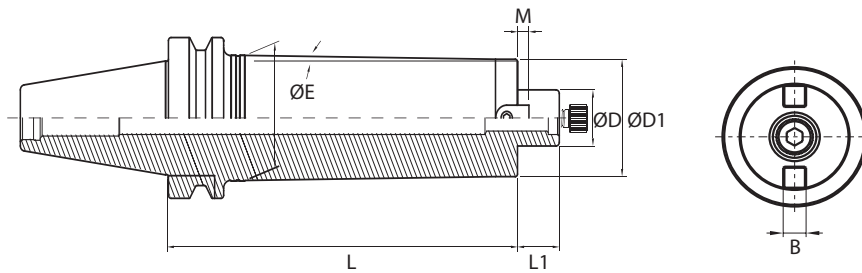
Designation	M	A	L	ØD(mm)	W
TMBA-M12	M12*1.75	10	35	33	10
TMBA-M16	M16*2.0	10	50	39	14
TMBA-M20	M20*2.5	14	54	49	17



BT-TFMC-L Long Face Milling Arbor



TOOLING SYSTEM

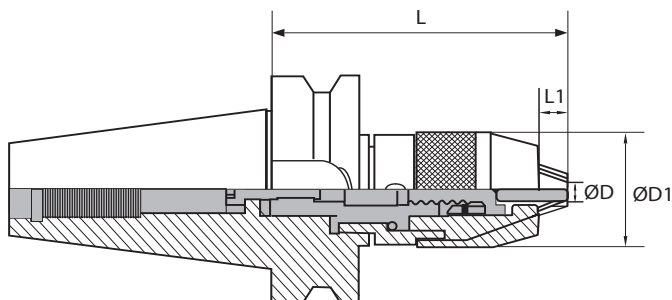


Type	Designation	ØD	ØD1	ØE	M	B	L	L1	S Wrench	Kg.
BT50	BT50-TFMC22-160R(D50)	22	46	49	5.6	10	160	19	S8	5
	BT50-TFMC22-200R(D50)	22	46	49	5.6	10	200	19	S8	5.4
	BT50-TFMC22-250R(D50)	22	46	49	5.6	10	250	19	S8	6.9
	BT50-TFMC22-160R(D63)	22	59	62	5.6	10	160	19	S8	6.1
	BT50-TFMC22-200R(D63)	22	59	62	5.6	10	200	19	S8	6.9
	BT50-TFMC22-250R(D63)	22	59	62	5.6	10	250	19	S8	7.9
	BT50-TFMC22-300R(D63)	22	59	62	5.6	10	300	19	S8	8.8
	BT50-TFMC27-200R(D80)	27	62	78	6.3	12	200	21	S8	8.2
	BT50-TFMC27-250R(D80)	27	62	78	6.3	12	250	21	S10	9.6
	BT50-TFMC27-300R(D80)	27	62	78	6.3	12	300	21	S10	11

* To activate coolant function, coolant clamp bolt must be installed and this is not included in standard product

BT-TNPU

NPU Drill Chuck Holder



Type	Designation	ØD	ØD1	L	L1	Kg
BT30	BT30-TNPU08-75	0.3-8	38	84.5	7.5	0.7
BT40	BT40-TNPU08-80	0.3-8	38	87.5	7.5	1.3
	BT40-TNPU13-90	0.3-13	50	102.5	12.5	1.7
	BT40-TNPU13-130	0.3-13	50	142.5	12.5	2.2
BT50	BT50-TNPU13-110	0.3-13	50	122.5	12.5	4.4
	BT50-TNPU13-130	0.3-13	50	142.5	12.5	4.7
	BT50-TNPU13-190	0.3-13	50	202.5	12.5	5.4

Recommended Shank insert range in minimum
 -TNPU08 : Over 20mm -TNPU13 - Over 30mm

SPANNER

For	Designation
TNPU08	TNPU08-SP
TNPU13	TNPU13-SP

BT-TMTA Morse Taper Arbor - BT



Shank

Shank

Coolant System

TOOLING SYSTEM



Fig.1

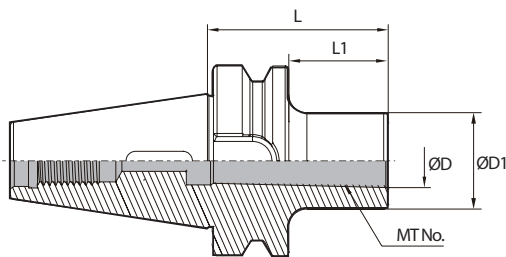
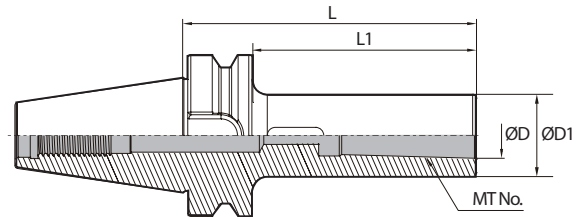


Fig.2

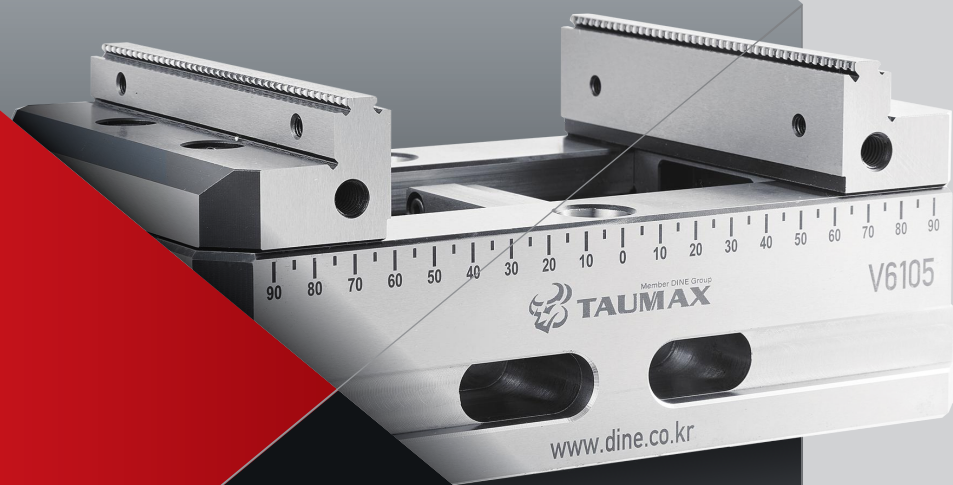


Type	Designation	MT No.	ØD	ØD1	L	L1	Fig.	Kg
BT40	BT40-TMTA1-120	1	12.065	25	120	93	2	1.3
	BT40-TMTA2-120	2	17.78	32	120	93	2	1.4
	BT40-TMTA3-135	3	23.825	40	135	108	2	1.7
BT50	BT50-TMTA2-60	2	17.78	32	60	22	1	3.6
	BT50-TMTA2-135	2	17.78	32	135	97	2	4.2
	BT50-TMTA3-65	3	23.825	40	65	27	1	4.4
	BT50-TMTA3-150	3	23.825	40	150	112	2	4.4
	BT50-TMTA3-180	3	23.825	40	180	142	2	4.6
	BT50-TMTA4-95	4	31.267	50	95	57	1	3.9

(mm)

02 Work Holding System

MC POWER VISE(PVT)	16
MC POWER VISE(PVTM)	17
MC MACHINE VISE(MVT)	19
DOUBLE LOCK VISE(DVT)	20
5-AXIS CENTERING VISE(FVT)	21

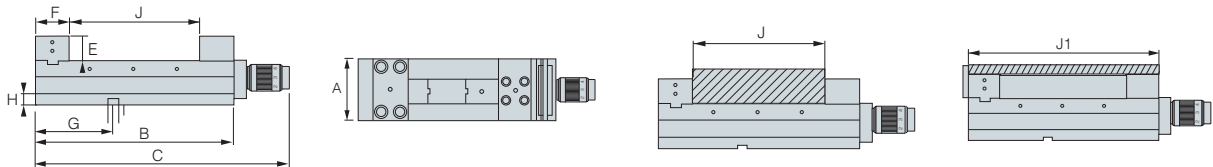


MC POWER VISE (PVT) (Standard type)



특징

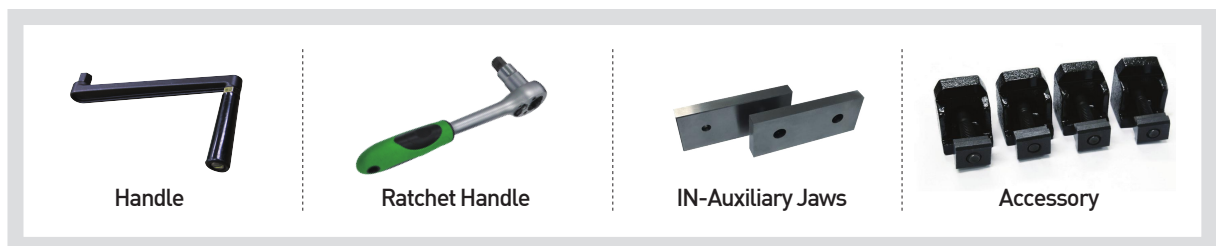
- Get Standard Type in Distributional Type price
- Mechanical grasping structure adopted
- Designed to minimize rising of structure
- Height tolerance : 0.01mm, Can be used in parallel
- In(18T) Sub-jaws available in basic option
- Durability improved with hard materials



(mm)

Designation	A	B	C	D	E	F	G	H	I	J	J1	KgF	kg
PVT-100	100	310	442	85	50	75	110	25	18	150	300	3,500	28.5
PVT-130	130	410	542	100	55	80	135	25	18	240	400	4,500	45.5
PVT-160	160	490	622	110	60	85	200	25	18	300	480	5,000	68.3
PVT-200	200	530	662	110	60	85	220	25	18	350	520	5,000	91.4

Basic Components



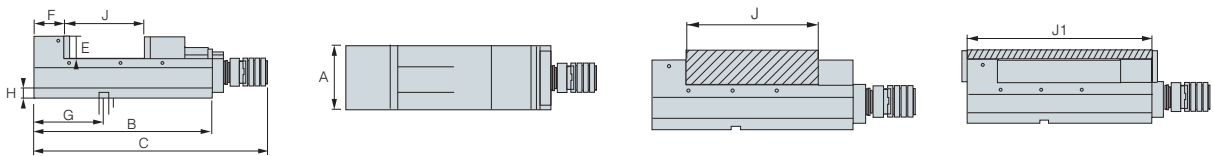
※ Handle / Retchat Handle are basically provide but not for sale

MC POWER VISE (PVTM) [Standard type]



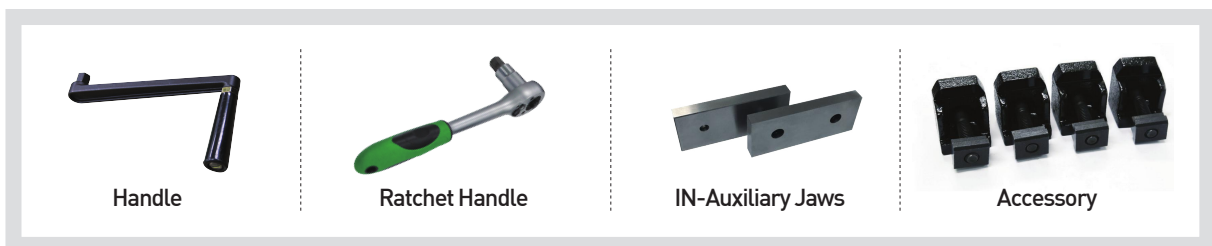
특징

- Distributional Type, convenient to use
- Mechanical grasping structure adopted
- 1 year warranty provided
- Height tolerance : 0.01mm, Can be used in parallel
- In(18T) Sub-jaws available in basic option



Designation	A	B	C	D	E	F	G	H	I	J	J1	KgF	kg
PVTM-100	100	395	530	85	50	60	110	25	18	200	370	3,500	28
PVTM-130	130	470	605	100	55	75	160	25	18	250	450	4,500	45
PVTM-160	160	545	680	100	60	80	200	25	18	300	520	5,000	67.8
PVTM-200	200	615	740	110	60	95	220	25	18	350	590	5,000	91.4

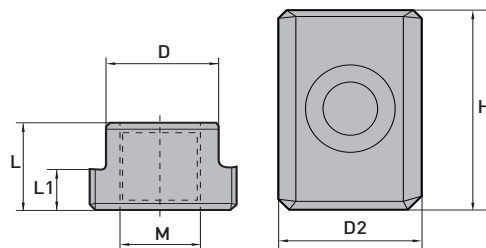
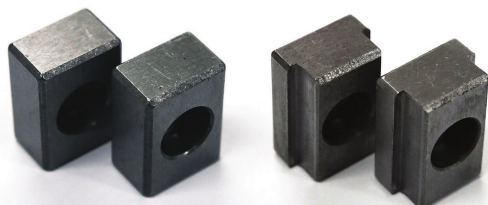
Basic Components



※ Handle / Ratchet Handle are basically provide but not for sale

ACCESORIES

GUIDE KEY



(mm)

Designation	D	D1	H	M	L	L1
KEY-14MM	14	18	25	M6	12	6
KEY-18MM	18	-	25	M6	12	6

IN/OUT JAWS & BLOCK

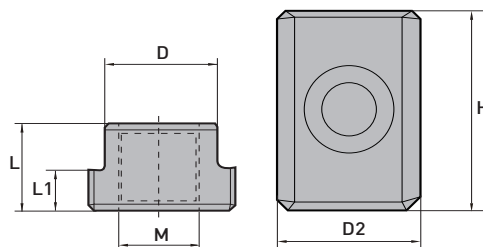
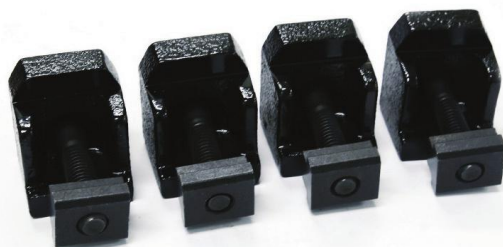


Type	Designation	For
IN/OUT Jaws	PVT-□□□ INSIDE JAWS	PVT/M
	PVT-□□□ OUTSIDE JAWS	PVT/M
TOP BLOCK	PVT-□□□ FIXED BLOCK	PVT
	PVT-□□□ SLIDER BLOCK	PVT

※ Sub-jaw specifications are the same as the specifications included in the conventional vise.

※ OUT sub-jaws are for separate purchase

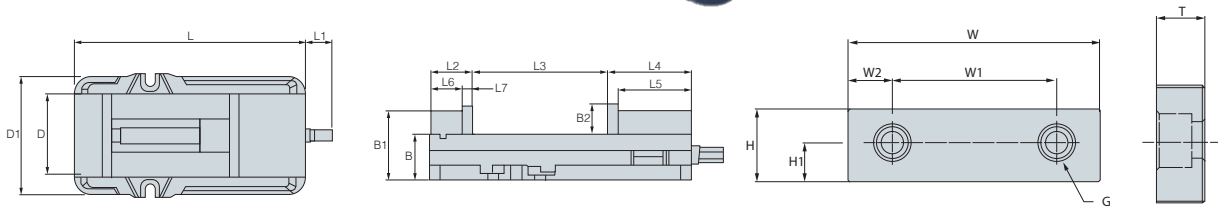
Clamp Set



(mm)

Type	A	B	C	d	h	h1	For	Items
Clamp Set (T-NUT & SCREW)	13.8	22	28	M12*1.75(S)	16	8	PVT/M-100	T-NUT/ 4 pcs. Each washer clamp/ bolt
	15.5	25	28	M12*1.75(M)	16	8	PVT/M-100,130	
	17.5	28	31	M12*1.75(L)	19	11	PVT/M-160,200	

MC MACHINE VISE (MVT) (Standard type)



FEATURE

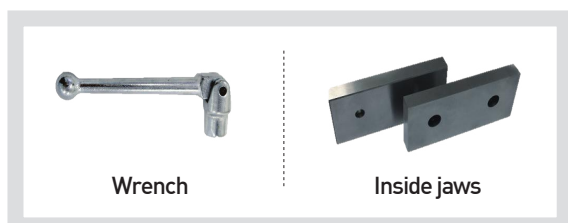
- Handy for use, versatile
- Max opening 8.9"
- Durability improved with hard materials
- Height tolerance considered, Can be used in parallel

Designation	L	L1	L2	L3	L4	L5	L6	L7	D	D1	B	B1	B2	Width	Max.CF	Kgs
MVT-154	438	56	70	225	141	123	52	18	154	230	73	111	44.5	154(6")	1,000kgF	31

Designation	W	W1	W2	H	H1	G	T
MVT-154 Subjaws	152	98.4	26.7	44.5	23.8	M12x1.75P	18

ACCESSORIES

Accessories



Wrench

Inside jaws



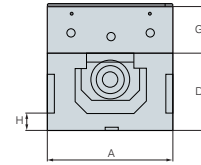
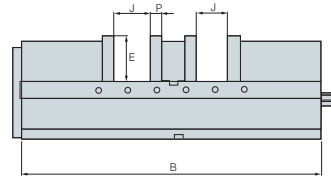
Designation

Swivel Base for MVT-154

Compatible specifications

MVT-154

DOUBLE LOCK VISE (DVT)



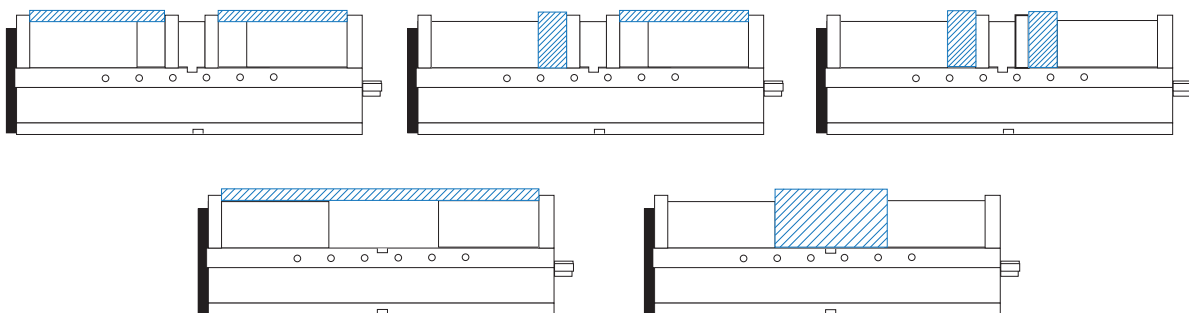
FEATURE

- 5 ways of clamping by changing jaws position
- Max opening 70mm for 2 pieces clamping, 136mm max for single piece clamping
- High hardened / Heat treated steel body with Hrc hardness 50, height tolerance 0.01mm
- Anti-lifting structure

Designation	A	B	D	E	G	H	P	J	Kg
DVT-160	160	500	160	63	60	23	18	70	64

(mm)

You can clamp workpiece in those five ways below.



Basic Components



Inside jaws



Wrench

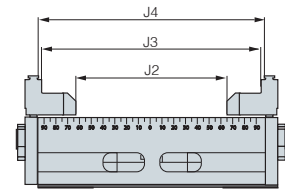
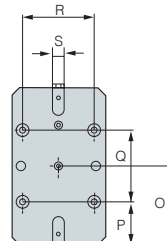
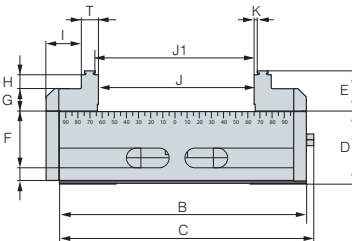
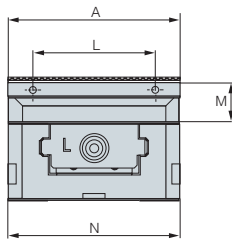
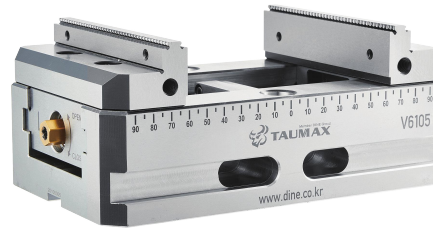


T-clamp set x4,
Guide key x2



Block, Screws * 6

5-AXIS CENTERING VISE (FVT)



FEATURE

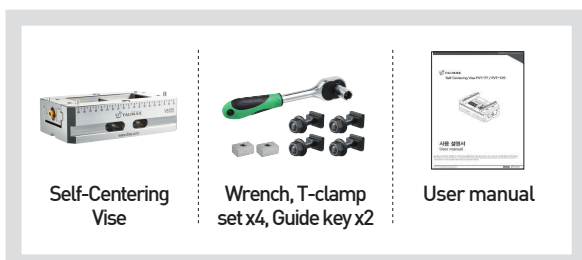
- Best economic clamping solution for 5-Axis machining
- Heat treated / High alloy steel base structure to provide excellent wear-resistance and high anti-tension
- Optimized to be used on high-quality machining process
- Jaws are NOT basically included, jaws can be chosen on demand
- Maximum clamping force 1,200kgF at 75kN
- height tolerance within 0.01mm
- Repeatability within 0.01mm or less for versatile and high level machining
- Easy to assemble and disassemble thanks to its modular structure

Designation	A	B	C	D	E	F	G	H	I	T	K	L	M
FVT-77	77	130	135	38	27	10	13	11	23	12	3	135	19
FVT-125	125	210	215	57	32	12	18	11	28	14	3	90	24

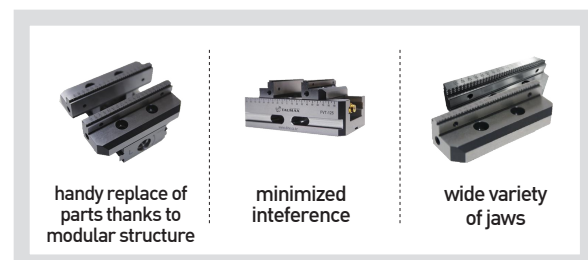
Designation	N	O	P	Q	R	S	J	J1	J2	J3	J4	Max.CF	Net Kg.
FVT-77	78	65	39	52	52	16	60	66	60	106	112	1,000	4
FVT-125	126	104	57	96	96	16	126	132	126	182	188	1,500	11

※ Jaws are not included in Vise, so please choose types of jaws which you are going to use.

Basic Components



FEATURES



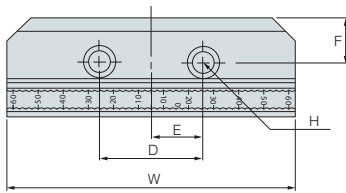
ACCESSORIES Serrated Jaws

Serrated Jaws



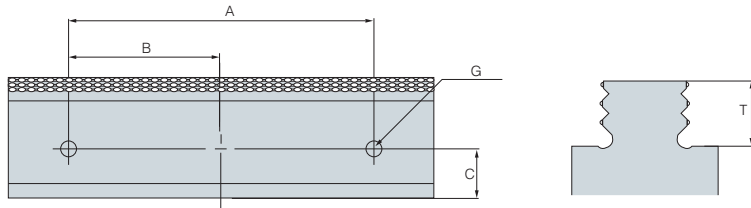
Single Serrated Jaws

- Teeth height 3mm
- Material : SCM 440
- Versatile
- Minimize interference and excellent clamping assistance thanks to its serrate



3 Steps Serrated Jaws

- Teeth height 7mm
- Material : SCM440
- Effective on thick and heavy weight material



For	Designation	A	B	C	D	E	F	G	H	T	W	material
FVT-77	Single Serrated Jaws	60	30	16	24	12	16	M4x0.7	Ø6.5	3	77	SCM440
	3 Steps Serrated Jaws	60	30	16	24	12	16	M4x0.7	Ø6.5	7	77	SCM440
FVT-125	Single Serrated Jaws	90	45	15	45	22.5	19	M5x0.8	Ø9	3	125	SCM440
	3 Steps Serrated Jaws	90	45	15	45	22.5	19	M5x0.8	Ø9	7	125	SCM440



General Jaws (AL-6061)

- Material : AL-6061
- Both sides available for use
- For soft material
- Anti-lifting design
- Customer can customize easily as necessary
- Wide width 60mm for user customizing

General Jaws (SCM440)

- Material : SCM440
- Both sides available for use
- For general material clamping
- Anti-lifting design
- Customer can customize as necessary
- Wide width 60mm for user customizing

03

Other Products



TAPER CLEANING DEVICE	24
MH-200	25
CLEAN-TEC FAN	26
Precision micro adjusting cartridge	27
Pullstud bolt Wrench	28
TOOL CLAMP	29
MAGNETIC BASE	30

TAPER CLEANING DEVICE



OTHER PRODUCTS

FEATURE

- Improves accuracy by cleaning Taper
- Increases the life cycle of tool
- Protects the spindle of equipment
- Maintains accuracy of the contact surface for a long time
- Compact design and Timer function

Type	Designation	Dia.	Height	Kg	Power Supply	Consumption	For
Drive unit	Taper cleaning drive unit	300mm	140mm	11	110-240 VAC	Max. 0.15kW	-
Cleaning attachment	Cleaning attachment ISO 30	230mm	160-190mm	10			BT/SK/CAT30
	Cleaning attachment ISO 40	230mm	160-190mm				BT/SK/CAT40
	Cleaning attachment ISO 50	230mm	160-190mm				BT/SK/CAT50
	Cleaning attachment HSK-63	230mm	160-190mm				HSK-63
	Cleaning attachment HSK-100	230mm	160-190mm				HSK-100

ACCESORIES



Type	Designation	For
Spare brushes	Spare brush ISO 30	BT/SK/CAT30
	Spare brush ISO 40	BT/SK/CAT40
	Spare brush ISO 50	BT/SK/CAT50
	Spare brush HSK-63	HSK-63
	Spare brush HSK-100	HSK-100

SHRINK FIT DEVICE MH-200



FEATURE

- Continuous heating available up to 30 times in 1 hours (Takes 2 minutes per heating each holder)
- Steel and SUS holder available as well
- All standard tapers available with a simple replacement of the adapter flange
- Heating coil with Ø25, Ø30, Ø40 and Ø55 in diameter replaceable parts (basically including Ø30mm coil inside)
- Protection of chuck from heating and manual tool cooling available through setting

Designation	WxLxH(mm)	Kg	Power	Max. Consumption	Frequency	Head working range	Available Dia. of tool
MH-200	325x340x690	25	single-phase AC 100V~240V(50.6Hz)	2.0Kw (220V basis)	7KHz~45KHz	280mm	Ø4~Ø16

ACCESORIES



Type	Designation	Dia.
Heating Coil	HEATING COIL-25MM	25mm
	HEATING COIL-30MM	30mm
	HEATING COIL-40MM	40mm
	HEATING COIL-55MM	55mm
Adapter Flange	ST10,12,16,20,25,32	-



MH-200 operation keypad	START/STOP	Start / stop switch
	SET-TIME	Set heating / cooling time
	ADD-TIME	Manual heating
	COOL	Start cooling
	UP/DOWN	Set time per 10 sec.

CLEAN-TEC FAN Cleaning Fan



Coolant System



FEATURE

- Increasing productivity by cleaning without opening the MC door
- Protect workers from injuries by auto chip blowing system
- Saving costs with minimizing uses of air compressure
- Could be equipped on ATC, Increase productivity with automation equipment

Designation	ØD(Unfolded)	ØShank	Max.RPM	Kg
Clean-Tec 160	160	20	12,000	0.2
Clean-Tec 260	260	20	8,000	0.2
Clean-Tec 330	330	20	8,000	0.5

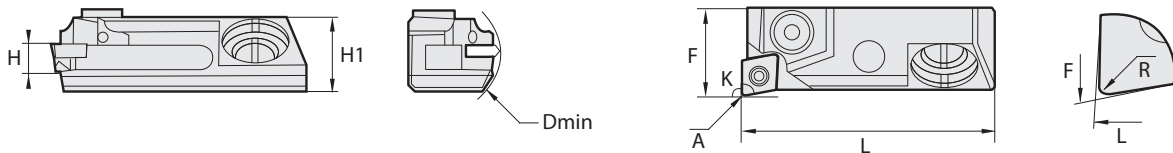
(mm)

ACCESORIES



Designation	Composition	For
Spare Part Kit for Clean-Tec 160	4 pcs Fiberglass wings and Springs included	Clean-Tec 160
Spare Part Kit for Clean-Tec 260		Clean-Tec 260
Spare Part Kit for Clean-Tec 330		Clean-Tec 330

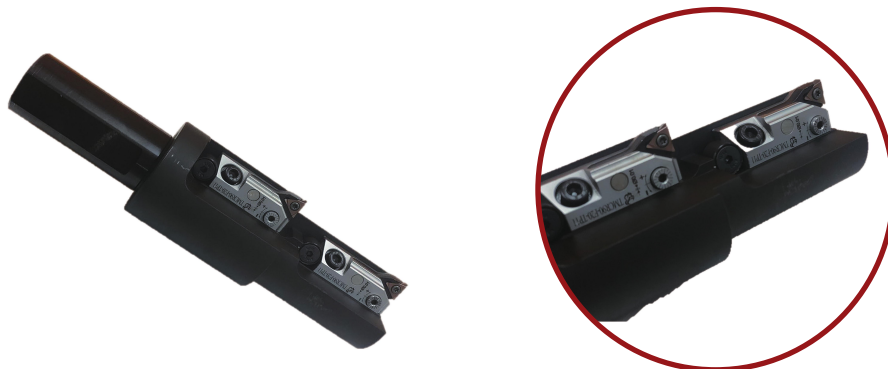
Precision micro adjusting cartridge



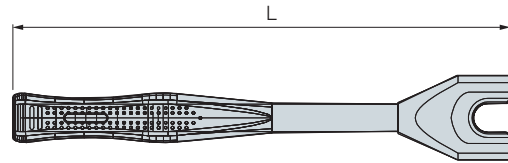
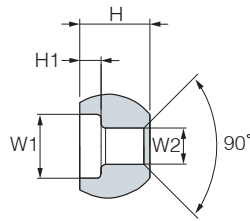
FEATURE

- Both Left/Right hand versions available, internal coolant type
- Provides minimum boring range from 28.00mm
- 2 types of lead angle for 90° and 95°
- Unit diameter adjustable by 0.01mm within the radial adjustment range of 0.3mm
- Adjustable radius of one gradation : 0.005mm
- Axial range adjustable : 1.0mm

Designation	K	H	F	L	H1	Dmin	R	Applied Insert
TMCR/L90-F16-CC06	90	8.8	16	45.8	13.5	28	0.4	CC..0602..
TMCR/L95-F16-CC06	95	8.8	16	45.8	13.5	28	0.4	CC..0602..
TMCR/L90-F16-TP09	90	8.8	16	45.8	13.5	28	0.4	TP..0902..
TMCR/L95-F16-TP09	95	8.8	16	45.8	13.5	28	0.4	TP..0902..
TMCR/L90-F20-TC11	90	8.8	20	45.8	13.5	36	0.4	TC..1102..
TMCR/L95-F20-TC11	95	8.8	20	45.8	13.5	36	0.4	TC..1102..
TMCR/L90-F20-TP11	90	8.8	20	45.8	13.5	36	0.4	TP..1103..
TMCR/L95-F20-TP11	95	8.8	20	45.8	13.5	36	0.4	TP..1103..



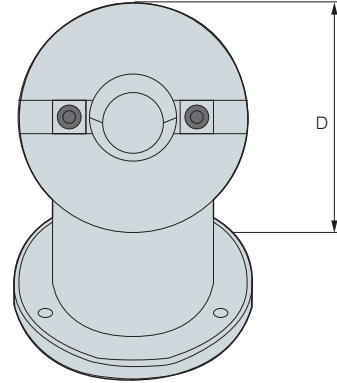
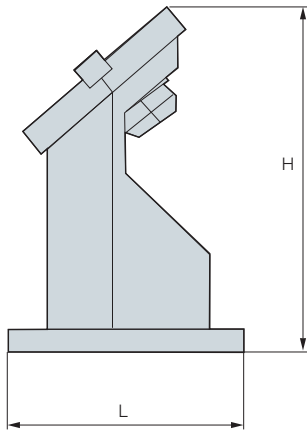
PULLSTUD BOLT WRENCH



Less working fatigue with pull stud bolt wrench!

Designation	L	H	H1	W1	W2	Torque	Kg
PSBW-30	210	16	5	13	7.0	≤80	0.31
PSBW-40	230	25	6	19	10.0	≤150	0.43
PSBW-50	280	33	10	30	17.0	≤280	0.84
PSBW-40(PS-805)	230	20.5	7	19	14.0	≤150	0.43
PSBW-40(PS-G51)	240	13	5	19	13.0	≤150	0.41
PSBW-50(PS-G41)	290	17	8	30	21.0	≤280	0.73

TOOL CLAMP



FEATURE

- For cutting tool and pullstud bolt tightening
- Enables more convenient and easier tightening in case of tool tightening using a 45-degree type
- Provides work stability by heavier load (3kg) than other makers

Designation	Applicable shank	L	H	D	Kg
TTC30	BT30, NT30	119	169	114	3
TTC40	BT40, NT40	119	169	114	3
TTC50	BT50, NT50	119	169	114	3

(mm)



MAGNETIC BASE



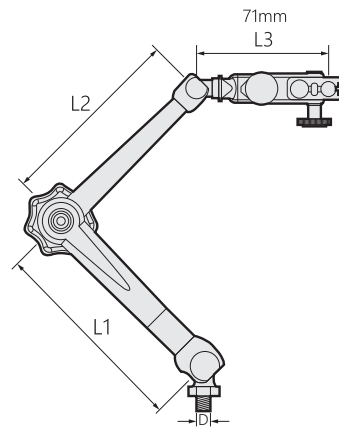
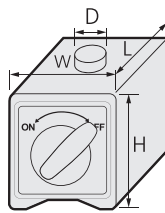
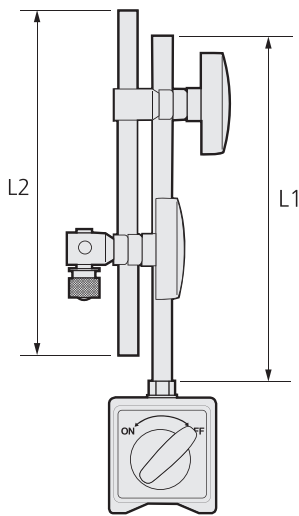
TMB-B



TMB-BV



TMB-330



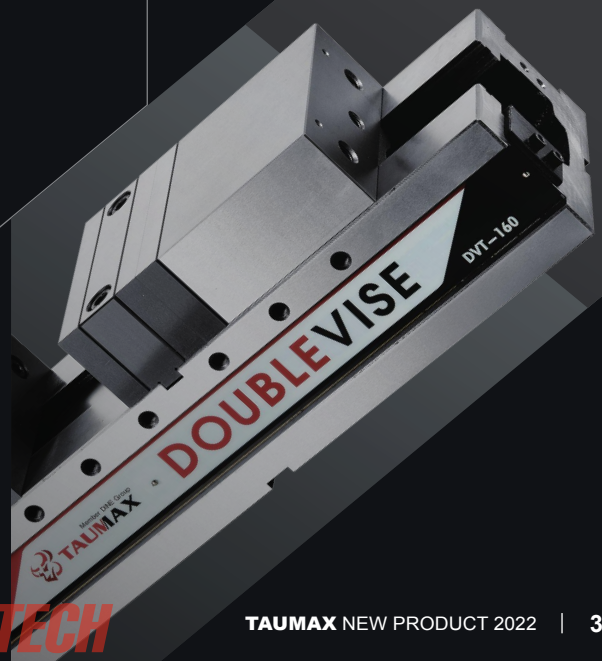
FEATURE

- Strong absorptive power(80 KgF)
- Smooth and precise joint movement
- Ensures lightness and precision as a multi-joint model with a full aluminium body

(mm)

Designation	Type	Kgf	L1	L2	L3	(L*W*H)	D	Kg
TMB-B	기본형	80	170*Ø12	160*Ø10	-	60*50*55	M8*1.25	1.6
TMB-BV	기본형(미세조정)	80	170*Ø12	160*Ø10	-	60*50*55	M8*1.25	1.7
TMB-330	다관절형	80	130*Ø12	130*Ø10	70	60*50*55	M8*1.25	1.5

NEW PRODUCT 2021





Head Office (15118) 24, MTV 26-ro, Siheung-si, Gyeonggi-do, Korea | T. 031-488-6200 F. 070-4275-5023 | Call Center. 1544-0920

Gyeongjin Branch T. 031-432-0989 F.031-435-1044 Jugbu Branch T. 041-541-6688 F.041-541-3553 Daegu Branch T. 053-252-1441 F.053-255-7176

Nambu Branch T. 051-831-3900 F.051-831-3901 Nambu Branch T. 055-276-5533 F.055-276-5534 Changwon Branch T. 055-281-8964 F.055-281-8965

E dine@dine.co.kr **H** www.dine.co.kr

