

Dasqua[®]

PRECISION INSTRUMENT



BORN IN ITALY, RAISED BY THE WORLD

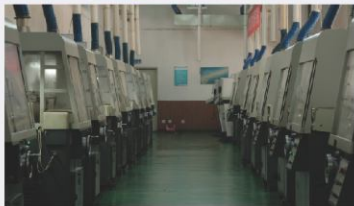


About Dasqua

Since the early 1980s, Dasqua embarked on supplying machinist calipers in Nord Italy. And today Dasqua are now deemed to be the symbol of reliability in our field. Combining both the tradition and spirit, with headquarters in Lodi, Italy, and two additional fulfillment facility strategically located in Los Angeles.(for Pan-America) , and Shanghai (for Asia area), Dasqua is currently serving customers in more than 50 countries globally.

In 2008, we launched the first rechargeable digital caliper in the world, with granted patent. In 2020, we changed to a latest carbide material for micrometer anvils. This new carbide replaces the traditional carbide which would naturally wear off, so now we have long-lasting accuracy assured. We also started making precision ground stainless steel threading rod this year to instead the alloy steel or carbon steel rods used for transmission of measurement.

All Dasqua measuring tools are guaranteed for 2 years. Our statement of core value as well as our long cultivated common culture at Dasqua is: Honest; Reliability; Responsibility. -----H.R.R



ROCKWELL HARDNESS TESTER

This hardness tester is used for determining Rockwell hardness of hard alloys, quenched and unquenched steels.

- ⚙️ • The high quality casting and fine craftsmanship ensure accurate, consistent readings
- | • Manual testing process, no need for electric controlling



Code	1804-3607
Maximum load	150 kg (1471N)
Load range	60,100,150,kg(588.4N,980.7N,1471N)
Initial range load	10 kg (98.07N)
Maximum test height	108m/m(4-1/4")
Depth of throat	135m/m(5-1/4")
Maximum depth of spindle below base	50m/m(2")
Size of base	180×465m/m(7"-18")
Machine height	630m/m(24-1/2")
Weight (approx)	65 kg (150lbs)

STANDARD ACCESSORIES	
Large testing tableφ150m/m(5-3/4")	1
Small testing tableφ62m/m(2-3/8")	1
V-block anvilφ58(2-3/16")	1
Diamond penetrator 120°	1
Steel ball penetrator 1/16"	1
Replacement steel ball 1/16"	5
Rockwell A standard test block	1
Rockwell B standard test block	1
Rockwell C standard test block	1
Rockwell C standard test block	1
Rockwell C standard test block	1
Screwdrivers	2
Level adjusting leg	3
Accessory box	1
Dustproof plastic cover	1
Operation manual	1



ROCKWELL HARDNESS TESTER



- Half automatic hardness tester except loading initial force and change force knob. Operation is very convenient and fast
- Color touch screen, displays loading force, indenter type, dwell time, and conversion scale
- Motorized control loading, dwell and unloading, eliminates error by manual operation
- Built-in micro processor auto compute max, min, mean and deviation value, resolution is 0.1HR, largely improve accuracy
- Auto hardness conversion to others scales, no need to check table and improve working efficiency
- Support Multiple languages, English, Turkish, German, etc. Convenient for local customers operation
- Save 2000 single testing results and 1000 group results for reviewing and analysis
- Optional blue tooth mini printer is available



Code	1804-3609
Rockwell scale	HRA, HRB, HRC, HRD, HRE, HRF, HRG, HRH, HRK, HRL, HRM, HRP, HRR, HRS, HRV
Preliminary Test Force	10Kgf(98.07N) Permitted Error: $\pm 2.0\%$
Total force	60Kgf(588.4N), 100Kgf(980.7N), 150Kgf(1471N) Permitted Error: $\pm 1.0\%$
Duration time	Adjustable 1-60s
Hardness Indication	5.2" Touch Screen, Resolution:640x480
Resolution	0.1HR
Loading Control	Auto Loading/Dwell/Unloading
Hardness Conversion	HRC, HV, HBS, HBW, HK, HRA, HRD, HR15N, HRB, HR30N, HR45N, HS, HRF, HR15T, HR30T, HR45T, ASTM, DIN
Conversion Standards	ASTM, DIN
Language Option	Chinese, English, German, Portuguese, Turkish, Czech, Korean
Correction Range	-3.0HR to +3.0HR, Step 0.1HR
Data Memory	2000 Single Measuring Result, Curve Analysis, Results Reviewing And Analysis
Data Output	Optional Blue Tooth Mini Printer
Instrument Throat	165mm
Maximum test height of Brinell and Vickers	175mm
Power supply	AC220V/50Hz; AC110V/60Hz
Dimension(LxWxH)	546x182x755mm
Gross/Net Weight	110Kg/90Kg

MOTORIZED DIGITAL ROCKWELL/SUPERFICIAL ROCKWELL HARDNESS TESTERS

DATA OUTPUT

FORCE LOADING BY ELECTRIC MOTOR (WITHOUT WEIGHTS)

- Automatic testing, the preliminary and main test force are loaded automatically
- LCD touch screen, easy operation
- Convert to other Rockwell scales, HV or HB automatically
- Tolerance testing
- Insert USB flash disk, save the testing results as Excel
- Self-correcting the hardness value for curved workpieces
- Force loading by electric motor (without weights)
- The test force is selected automatically according to hardness scale
- According to ISO 6508



elevate the stage by hand to let the workpiece touch the indenter protection cover, press start to start testing automatically, the preliminary and main test force are loaded automatically

LCD touch screen

operator

workpiece name

workpiece radius

scale

dwelt time

testing value

data and time

low and high limits

conversion

calibration

start return



Ø63mm flat anvil (included)



Ø150mm flat anvil (included)



level (included)



touch pen (included)



V-type anvil (included) for cylinders with diameter Ø4~60mm



small V-type anvil (optional) for cylinders with diameter Ø2~4mm



desk (optional)



SPECIFICATION

Code		1807-1000	1804-1005	1807-1010
Type		Rockwell	Superficial Rockwell	Rockwell and Superficial Rockwell
Hardness scale	with standard indenters	HRA, HRB, HRC, HRD, HRF, HRG	HR15N, HR30N, HR45N, HR15T, HR30T, HR45T	HRA, HRB, HRC, HRD, HRF, HRG, HR15N, HR30N, HR45N, HR15T, HR30T, HR45T
	with optional indenter	HRE, HRH, HRK, HRL, HRM, HRP, HRR, HRS, HRV	HR15W, HR30W, HR45W, HR15X, HR30X, HR45X, HR15Y, HR30Y, HR45Y	HRE, HRH, HRK, HRL, HRM, HRP, HRR, HRS, HRV, HR15W, HR30W, HR45W, HR15X, HR30X, HR45X, HR15Y, HR30Y, HR45Y
Preliminary test force		98N/10kgf for Rockwell	29.4N/3kgf for Superficial Rockwell	98N/10kgf for Rockwell 29.4N/3kgf for Superficial Rockwell
Test force		588N (60kg), 980N (100kg), 1471N (150kg)	147.1N (15kg), 294.2N (30kg), 441.3N (45kg)	147.1N (15kg), 294.2N (30kg), 441.3N (45kg), 588N (60kg), 980N (100kg), 1471N (150kg)
Stage elevation		manual		
Load control		automatic (load/dwell/unload)		
Load dwell time		0~60 second		
Resolution		0.1HR		
Output		USB		
Max. workpiece height		220mm		
Max. testing width		200mm (from the center of indenter to the wall of main body)		
Power supply		220V, 50/60Hz		
Dimension		510×260×780mm		
Weight		70kg		

STANDARD DELIVERY

Code			
Main unit	1 pc	1 pc	1 pc
Ø63mm flat anvil	1 pc	1 pc	1 pc
Ø150mm flat anvil	1 pc	1 pc	1 pc
V-type anvil	1 pc	1 pc	1 pc
Diamond indenter	1 pc	1 pc	1 pc
Ø1.5875mm carbide ball indenter	1 pc	1 pc	1 pc
Hardness test block HRB88~95	1 pc	—	1 pc
Hardness test block HRC60~65	1 pc	—	1 pc
Hardness test block HRC20~30	1 pc	—	1 pc
Hardness test block 78~88HR15N	—	1 pc	1 pc
Hardness test block 55~73HR30N	—	1 pc	1 pc
Hardness test block 57~69HR30T	—	1 pc	1 pc
USB flash disk (8G)	1 pc	1 pc	1 pc
Level	1 pc	1 pc	1 pc
Touch pen	1 pc	1 pc	1 pc
Anti-dust cover	1 pc	1 pc	1 pc

OPTIONAL ACCESSORY

Hardness test block HRB88~100	
Hardness test block HRC60~70	
Hardness test block HRC20~30	
Hardness test block 78~88HR15N	
Hardness test block 55~73HR30N	
Hardness test block 73~82HR30T	
Small V-type anvil	
Desk	

MOTORIZED DIGITAL BRINELL HARDNESS TESTERS

- Automatic testing automatic test force loading LCD touch screen, easy operation
- Measure indentation by measuring microscope then read the hardness value from LCD
- Tolerance testing
- Insert USB flash disk, save the test results as Excel
- Converted to HRA HRB HRC HRD HRF HV HB HR15N HR30N HR45N HR15T HR30T HR45T
- Force loading by electric motor, without weights
- According to Iso 6506

**AUTOMATIC TESTING,
AUTOMATIC TEST FORCE LOADING**

**FORCE LOADING BY ELECTRIC
MOTOR (WITHOUT WEIGHT)**

LCD touch screen

operator: Operator: Jnr

tolerance: Range: 90 To: 110

diameter of indenter and test force: Load&Dis: 10/1000 Dwell Time: 10

hardness value: HEW 97.3

conversion: Conversion: 180

reset

workpiece name

dwelt time

start

diameter of indentation

calibration

measuring microscope

manual rotation turret

indenter stage

handwheel

USB flash disk (included)

step: 1

elevate the stage by hand to let the indenter approach the workpiece, press "start" to start testing automatically, the test force is loaded automatically

step: 2

measuring microscope

measure indentation with measuring microscope

step: 3

read the hardness value from LCD

Ø80mm flat anvil (included)

Ø200mm flat anvil (included)

touch pen (included)

desk (optional)

V-type anvil (included)

STANDARD DELIVERY

Main unit	1 pc
Ø80mm flat anvil	1 pc
Ø200mm flat anvil	1 pc
V-type anvil	1 pc
Ø2.5mm carbide ball indenter	1 pc
Ø5mm carbide ball indenter	1 pc
Ø10mm carbide ball indenter	1 pc
Hardness test block 150~250HBW2.5/187.5	1 pc
Hardness test block 75~125HBW10/1000	1 pc
Hardness test block 175~250HBW10/3000	1 pc
USB flash disk (8G)	1 pc
Touch pen	1 pc
Anti-dust cover	1 pc

OPTIONAL ACCESSORY

Hardness test block 200~300HBW2.5/187.5	
Hardness test block 90~200HBW10/1000	
Hardness test block 200~300HBW10/3000	
Brinell indentation measuring system	
Desk	

SPECIFICATION

Code	1807-2000	1807-2005
Turret rotation	manual	automatic
Range	8~650HBW	
Reading mode	directly read from LCD	
Test force	62.5, 100, 125, 187.5, 250, 500, 750, 1000, 1500, 3000kgf	
Max. workpiece height	200mm	
Max. testing width	155mm (from the center of indenter to the wall of main body)	
Stage elevation	manual	
Load control	automatic (load/dwell/unload)	
Load dwell time	5~60 second	
Measuring microscope	magnification	20X
	resolution	0.625µm
Power supply	220V, 50/60Hz	
Dimension	550x210x750mm	
Weight	110kg	

DIGITAL MICRO-VICKERS HARDNESS TESTER (ADVANCED TYPE)

camera connector

eyepiece

image to eyepiece/camera switch

cylinder holder (included)

vice (included)

slice holder (included)

X-Y stage

printer

motor driven turret

40X objective

indenter

10X objective

indentation diagonals

hardness value (HV)

445.8HV

test force

load dwell time

converted hardness value

CODE: 1807-3000

- Measure hardness of thin or small workpieces
- Based on Vickers (HV), can be converted to Rockwell (HRA HRB and HRC)
- According to ISO 6507

SPECIFICATION

Test force	0.01, 0.025, 0.05, 0.1, 0.2, 0.3, 0.5, 1kgf
Vickers scales	HV0.01, HV0.025, HV0.05, HV0.1, HV0.2, HV0.3, HV0.5, HV1
Stage elevation	manual
Load control	automatic (load/dwell/unload)
Load dwell time	5~60 second (5 second increment)
Objective	10X, 40X
Eyepiece	15X
Total magnification	150X (for observation) 600X (for measurement)
Max. workpiece height	85mm
Max. testing width	85mm (from the center of indenter to the wall of main body)
X-Y stage	dimensions: 100×100mm travel range: 25×25mm graduation: 0.01mm
Data output	RS232C
Power supply	110/220V, 50Hz
Dimension	540×500×640mm
Weight	50kg

STANDARD DELIVERY

Main unit	1 pc
10X, 40X objective	1 pc of each
Micro Vickers indenter	1 pc
Hardness test block 400~500HV0.2	1 pc
Hardness test block 700~800HV1	1 pc
Slice holder	1 pc
Vice	1 pc
Cylinder holder	1 pc
Level	1 pc
Anti-dust cover	1 pc

OPTIONAL ACCESSORY

20X objective	
Hardness test block 400~500HV0.2	
Hardness test block 700~750HV1	
Measuring system	
Camera adapter	

BRINELL/ROCKWELL/VICKERS HARDNESS TESTER

Electric Brinell/Rockwell/Vickers Hardness Tester is suitable for hardening steel, surface hardening steel, cemented carbide steel, cast iron, nonferrous metal, various quenched and tempered and annealed steel, hardened thin steel plate, soft metal, surface heat treatment and chemical heat treatment, etc. It is a common hardness testing machine for industrial and mining enterprises



- It has three test methods: Brinell, Rockwell and Vickers
- Multi-purpose and multi-function hardness tester with Seven-level test force can meet the requirements of users for various hardness tests
- Rockwell hardness reading dial pointer display, Brinell and Vickers look-up table
- Test force exertion, loading and unloading are automatically completed
- Wide range of application and easy operation

Code	1804-3610	Vickers hardness test range	8HV~2900HV
Initial force	98.07N(10kg) Tolerance \pm 2.0%	Brinell hardness test range	8HBW~650HBW
Total force	98.07N(10kg)~1839N(187.5kg) Tolerance: \pm 1.0%	Power supply	AC220+5%,50~60Hz
Brinell test force	31.25kgf(306.5N),62.5kgf(612.9N),187.5kgf(1839N)	Shape size(mm)	540 \times 230 \times 820mm
Brinell scale	HBW2.5/31.25,HBW2.5/62.5, HBW2.5/187.5,HBW5/62.5	Host weight	80kg
Specification of diamond indenter	Diamond Rockwell indenter and Diamond Vickers indenter	Hardness block	5
Specification of steel ball indenter	ϕ 1.5875mm, ϕ 2.5mm, ϕ 5mm Steel ball indenter	Power cord	1
Rockwell test force	60kgf(588N)100kgf(980.7N)150kgf(1471N)	Objective lense	2
Rockwell scale	HRA HRB HRC HRD HRE HRF HRG HRK HRH	ϕ 1.5875, 2.5,5mmCemented carbide ball	One of each
Vickers test force	30kgf(294.2N) 100kgf(980.7N)	Fuse 2A	2
Vickers scale	HV30 HV100	Floodlight	1
Minimum unit of measurement	Brinell:0.004mm Vickers:0.002mm	Large, medium and V-shaped test-platform	one of each
Amplification of Microscope	37.5x,75x	Sliding test bench	1
Rockwell maximum test height	260mm	Product Description	1
Maximum test height of Brinell and Vickers	200mm	Rockwell indenter	1
Duration time	2~60s	Vickers indenter	1
Rockwell hardness test range	20HR~100HR	Measuring microscope	1

DIGITAL MICROSCOPE

- Automatic testing, the preliminary and main test force are loaded automatically
- The test force is selected automatically according to hardness scale
- Convert to other Rockwell scales, HV or HB automatically
- Self-correcting the hardness value for curved workpieces
- Insert USB flash disk, save the testing results as Excel
- Force loading by electric motor (without weights)
- Tolerance testing
- According to ISO 6508
- LCD touch screen, easy operation



A: USB port, HDMI port, Power



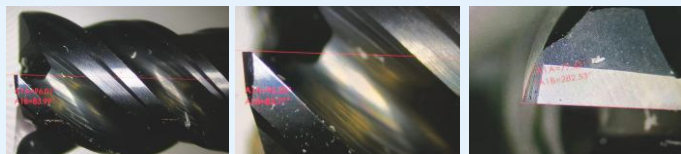
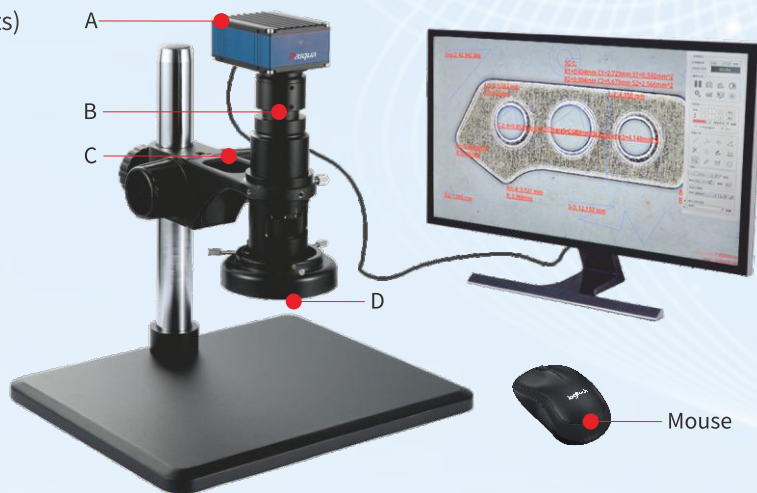
C: Fine focus knob



B: Step-zoom lens 0.7X-4.5X



D: 72 LED adjustable light sources



Code	1804-7013		
Objective Specification	Objective magnification	0.7X-4.5X	
	CTV multiple	0.5X	
Camera Specification	Resolution	1920*1080	
	Dimension	80*60-42	
	Frame rate	60fps	
	Output	HDMI	
Light Source	Function	take picture/video, measuring, saving, sharpening, white balance, cross hair	
Display screen		72 LED adjustable light sources	
Frame		22" HDTV (OPTIONAL)	
		320x260mm, φ50mm	
	Focus range	42mm	
	Working distance	105mm	
	Center distance	140mm	
	Optical enlargement	0.35X-2.25X	
Field of view	Combined magnification	20X-136X	
Optional accessories	max 24mm*13mm min 3.5mm*1.9mm	(Optional accessories to increase or decrease the field of view)	
	1804-7060	0.5xObjective	Magnification 13.3X~85.5X
	1804-7065	2xObjective	Magnification 53.2X~342X

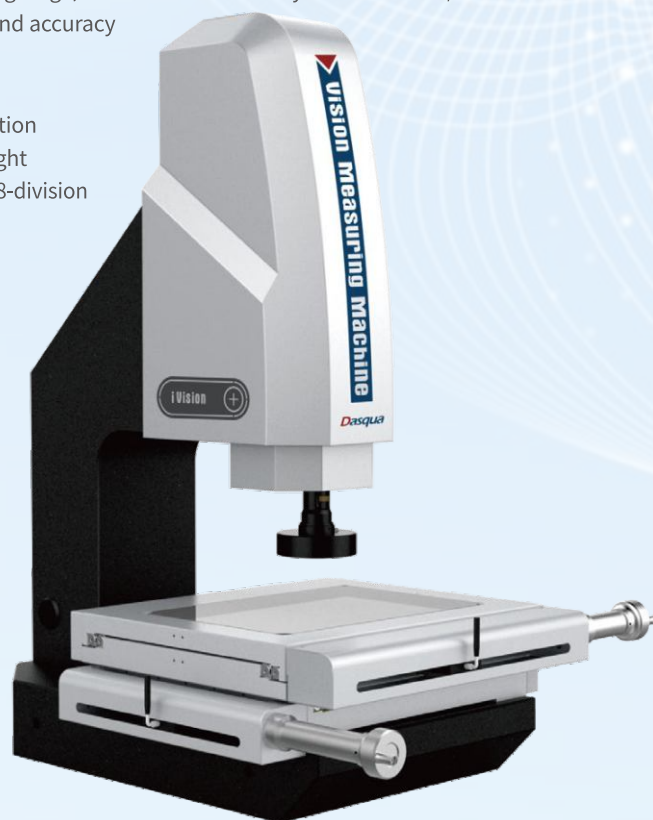
HIGH ACCURACY MANUAL VISION MEASURING MACHINE



- High definitive detented zoom lens and high resolution digital camera, to ensure clear image without distortion
- High accuracy A grade optical linear scale with precision working stage, to ensure the accuracy is within $2.0+L/200\mu\text{m}$
- High precision marble base and pillar, to ensure high stability and accuracy
- High precision toothless rod and fast moving locking device, to ensure repeatability error less than $2\mu\text{m}$
- With programmable surface 4-ring 8-division LED Cold Illumination and contour LED parallel illumination and internal intelligent light adjustment, it can automatic control the brightness in the 4-ring 8-division
- Powerful function iMeasuring2.1 measuring software highly enhance the quality control situation

STANDARD DELIVERY:

Description	Description
Measuring Software	Operation Manual,Packing List
LED parallel contour illumination	Data Cable
Surface 4R/8D LED Illumination	Controller
Power Cable	0.5um Linear Scale
Click Zoom Lens	Calibration Block
1/2.9" Digital Camera	Video Cable
Anti-dust Cover	Fuse
3mm Hex Key Wrench	Warranty Card
Dongle	Product Certification

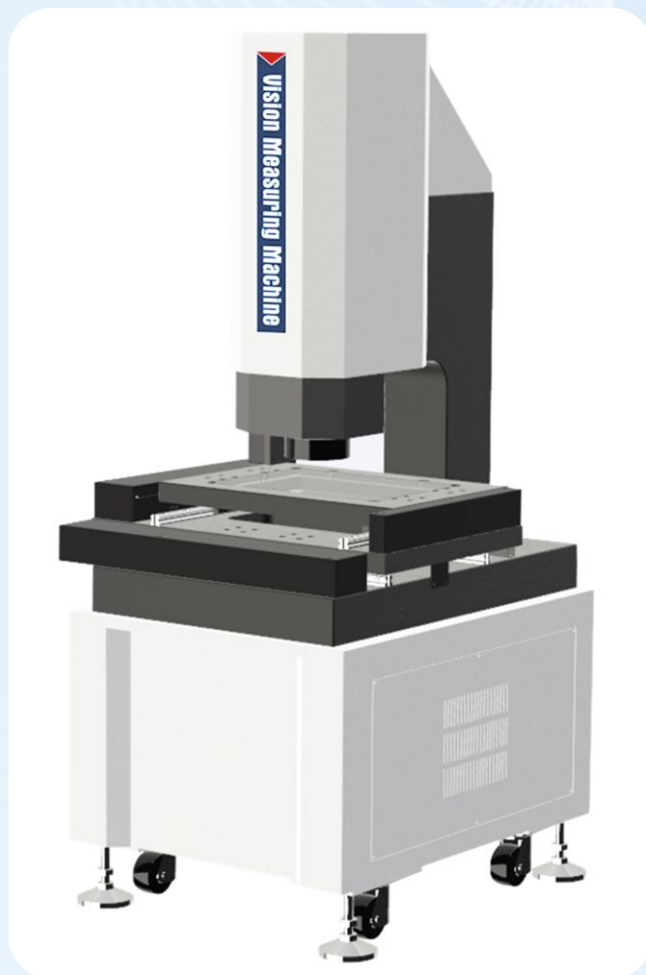


Code	1804-7007	1804-7008	1804-7009
X/Y-axis Travel	400x300mm	100x100mm	200x100mm
Z-axis Travel	High-precision linear guide , working travel 200mm		
X/Y/Z-axis Travel	0.5 um		
X/Y-axis Accuracy	$\leq 2.0+L/200(\mu\text{m})$		
Repeatability	$\pm 2\mu\text{m}$		
Base and Pillar	High Accuracy Marble		
Illumination System (Software Adjustment)	Surface: Stepless Adjustable 4-ring 8-division LED Cold Illumination		
	Contour: LED Parallel Illumination		
	LED Laser Navigation Lights		
CCD Camera	High Resolution Digital Camera		
Zoom lens	6.5X High Resolution Detented Zoom Lens		
	Magnification:0.7X~4.5X;Video Magnification:26X~172X		
Working Environment	Temperature : $20^{\circ}\text{c}\pm 1\text{C}$, change range $< 1\text{C/hr}$		
	Humidity:30%~800RH		
	Vibration $<0.002\text{g}$, $<15\text{Hz}$		
Measuring Software	iMeasuring 2.1		
Operation System	Support XP, WIN7, WIN8.1, WIN 10, 32/64 operating system		
Language	English, Simplified Chinese, Traditional Chinese, other language versions can be added		
Net Weight	350Kg		

HIGH ACCURACY AUTOMATIC VISION MEASURING MACHINE

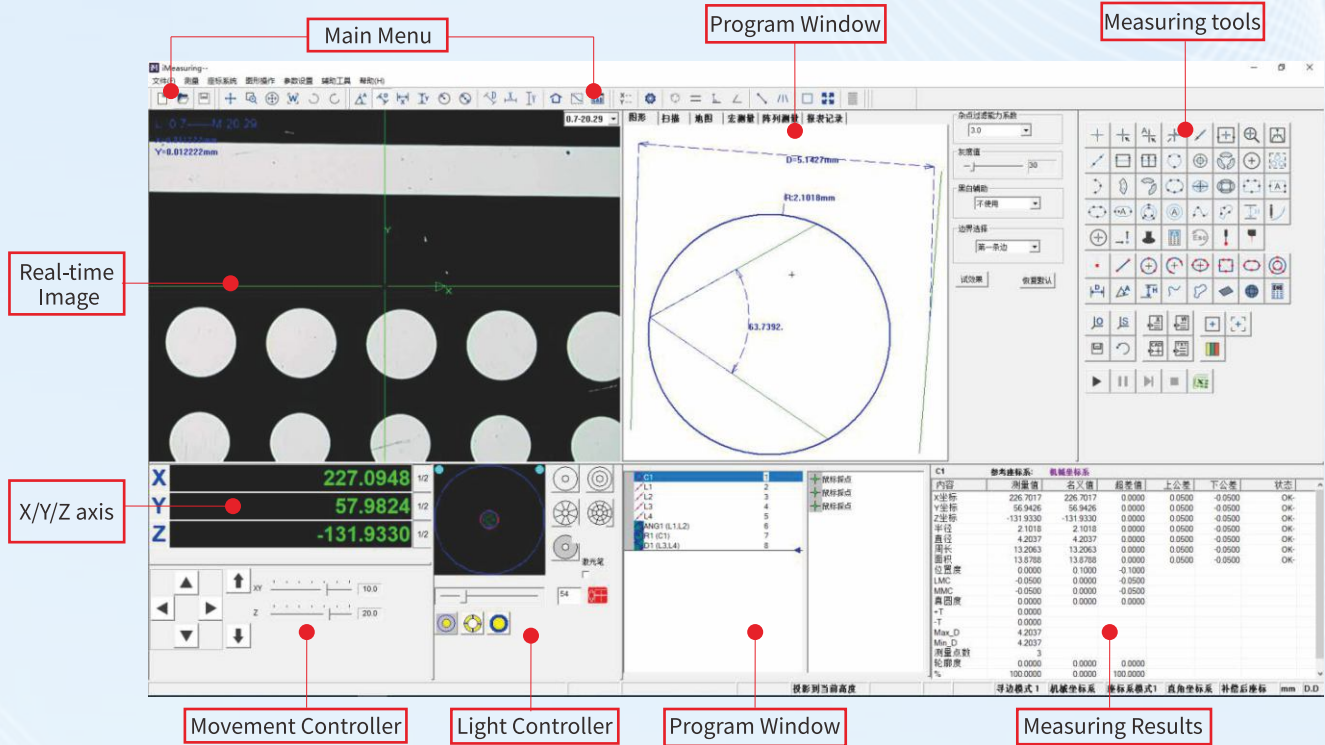


- XYZ three-axis CNC automatic precision control, precise positioning
- Granite base and pillar, good stability
- Precision linear guides, grinding-grade ball screws and AC servo motors, etc., ensure the accuracy and stability of the motion system
- 0.5μm high-precision grating ruler to ensure the positioning accuracy and measurement accuracy of the system
- High-resolution digital camera to meet the needs of clear observation and precise measurement
- 6.5X high-definition optical lens, accurate zoom, one-time pixel correction
- Program-controlled 5-ring 8-area LED surface illumination and parallel LED contour illumination system intelligently realize 256-level brightness adjustment
- Vimeasoft series automatic Vision measurement software, powerful and easy to operate



Code	1804-7019	1804-7020	1804-7021	1804-7022	1804-7023
X/Y Axis Travel	220*120	300*200	400*300	500*400	600*500
Z Axis Travel	150mm	200			
X/Y/Z-3 Axis Linear Scale	Glass grating ruler, resolution: 0.5um				
Accuracy	XY Axis: $\leq 2.5+L/200(\mu m)$ Z Axis: $\leq 5.0+L/200(\mu m)$				
Repeatability	2um				
Operation Mode	Joystick controller, Mouse operation, automatic detection program.				
Video System	1/2"CCD Digital Color Camera	1/3" High Resolution Digital Camera		1/2" High Resolution Digital Camera	
	6.5X Manual Zoom Lens, Optical Magnification : 0.7X-4.5X, Video Magnification : 26.6X~171X				
Operation System	win7、win10、win11				
Power Supply	220V/50Hz/10A				
Load Capacity	20kg	25Kg~50Kg			
Dimension(WxDxH)	760*600*900	1132*720*1665	1280*840*1688	1257*920*1640	1600*1050*1650
Net Weight	146kg	380kg	450kg	600kg	1380kg
Note	L is measured length(mm), the mechanical accuracy of Z-axis and focus accuracy is greatly related to the surface of the workpiece.Magnification is approximate value, it is related to the dimension of monitor and resolution.0.5X or 2X objective is optional available according to the needs				

SOFTWARE INTERFACE



MEASURING TOOLS INTRODUCTION:

To realize the measuring of point, line, circle, arc, ring, rectangle, ellipse, curve, etc.



Support measuring of multiple different points



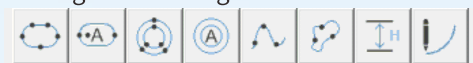
Support multiple different curve, ring and slot measuring tools, also include vision measuring height, profile scanning



Support multiple different line and circle measuring tools



Support multiple different arc, ellipse and rectangle measuring tools

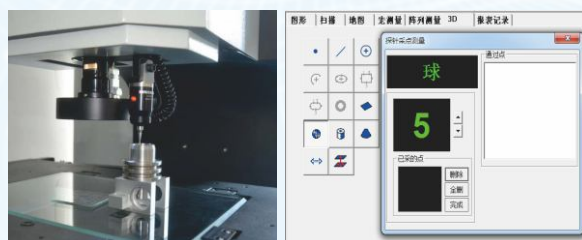


Construct measuring tools



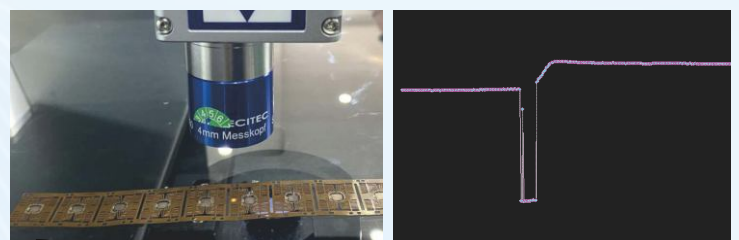
PROBE

The software supports to add contact probe for 3d measuring



LASER MEASURING

Powerful laser measurement function, easy to achieve high-speed measurement of flatness, subtle concave points, convex points, V-shaped angles and high-precision surface scanning, and objects that cannot be measured by probes



AUTOMATIC FLASH IMAGE MEASURING EQUIPMENT

HIGH EFFICIENT PRECISE SIMPLE FAST OUTPUT

- Measurement at 99+ different characteristics of the workpiece at same time
- Measure 100+ workpiece at one time
- Automatic focus adjustment: "automatic focus" can automatically adjust the z-axis height, so that the measured object is in a clear state
- Automatic measurement: The self-developed automatic measurement operator realizes the simultaneous measurement of width, hole, ring, angle and other elements. It is easy to use and fast to measure
Measurement results are automatically saved, export to statistical forms



Standard Configuration	Optional Configuration	
Machines	Coaxial light	Network card
Computer	Pedal	CAD import function
encryption system	Data transmission software	MES transmission function
Software	Remote control function	Customization

Item no.			1805-2000	1805-2010
Measuring range(mm)	wide field		ø100×80	200×200
	small field		/	130×130
Accuracy (μm)	Without splicing	wide field	±3	±3
		small field	/	±1
	With splicing	wide field	/	± (5+0.02L)
		small field	/	± (3+0.02L)
repeated accuracy (μm)	Without splicing	wide field	±1	±1
		small field	/	±0.5
	With splicing	wide field	/	±2
		small field	/	±1.5
Travel(mm)			Z axis:75	X axis:120,Y axis:125,Z axis:75
Dimension of glass plate (mm)			150×150	249×229
Optical System	Lens	Φ100mm Bi-telecentric lens		Φ100mm Double field, Bi-telecentric lens
	Surface light (electric)	4-zone medium and low angle ring lighting (white light), ring (directional) lighting (green light)		4-zone medium and low angle ring lighting (white light), ring (directional) lighting (green light)
	Transmission light	Telecentric Parallel Illumination (Green Light)		Telecentric Parallel Illumination (Green Light)
Dimension (mm)			580×235×790	580×430×790
Weight (kg)			≈40	≈55
Capacity (kg)			5	
Measuring results			2D measurement	
Data output			Data transmission and statistics	
Power requirement			220V~, 50Hz, 600W	
Operating Environment			Temperature: +20±2°C, Humidity: 30%-80%, Vibration: <0.002g, <15Hz	

DIGITAL TOOL PRESETTER

- The guide rail of the instrument is a mixed structure of rolling and sliding (plastic paste). The X direction is a sliding (plastic-coated) guide rail with good rigidity and stable precision, driven by a ball screw. The Z direction is
- THK precision rolling guide imported from Japan. Flexible operation, high precision, long life, no crawling
- The Z direction of the instrument is equipped with a fast and micro-movement mechanism
- The tool locking adopts vacuum locking, which has strong versatility (The instrument comes with a vacuum pump)
- The instrument adopts CCD optical non-contact measurement system. The display part is a 17" color LCD screen
- The instrument is equipped with image processing software, which has the functions of automatic tracking and recognition of the full-screen winter shape of the cutting edge and automatic and accurate measurement of the radius and length of the cutting tool
- The instrument can automatically track and measure the angle and arc R of the tool
- The instrument has a center preset function, which can accurately adjust the boring and milling tools to the required size
- The instrument is equipped with a precision grating system, which has the functions of metric and imperial conversion and diameter and radius conversion
- The instrument is controlled by PC, which can exchange data with the host very well, and can store the information of 10,000 cutting tools
- The instrument can be equipped with a variety of general-purpose printers (optional).11. The instrument can choose ISO/BT50, 40, 30, HSK, VDI, and other spindle forms and can be equipped with various diameter reducing devices (optional)The instrument adopts a fully enclosed, electrostatically sprayed shell. Marble top, floor base. It is suitable for on-site use in modern large-scale workshops



Dasqua Code		1805-0000	1805-0005	1805-0010	1805-0015
Measuring Range	Radial (X) Measuring Range R	150(Φ300)	200(Φ400)	250(Φ500)	300(Φ600)
	Axial (Z) Measuring Range L	400	400	500	600
Resolution		0.001mm			
Display System	Objective Lens Magnification	2X			
	Total Magnification	70X			
	Display Screen	17" LCD			
	Light Source	LED cold light			
Spindle Parameters	Spindle Runout	Radial circular runout ≤ 5μm			
	Spindle Taper	7:24			
	Drive Mode	Manual			
Repeated Positioning	X	±0.002mm			
Accuracy	Y	±0.002mm			
Computer		Standard Configuration			
Instrument Dimensions: (LxWxH)		1150x650x1600mm	1150x650x1600mm	1300x650x1800mm	1300x650x1950mm

MULTI-HOLDERS TOOL PRESETTER

- The high-precision spindle part adopts the dense ball shaft system, and the coaxiality (radial circular runout) is less than 0.005mm within any range of 300mm, which meets standard (high precision level) of the tool preset measuring instrument and fully guarantees the tool Accuracy of measurement and adjustment
- The main body is a fully enclosed structure with good accuracy retention and is suitable for use in the workshop environment
- The optical system is a projection system with a large working distance of 20 times. It can not only adjust and measure general tools with a diameter of 600mm and a length of L700mm, but also can be used to adjust the contour and diameter of the teeth of multi-toothed disc milling cutters
- The optical lighting source is equipped with a cooling device: the optical system is equipped with a dust cover.
- The two-coordinate motion guide rail in the X and Z directions of the instrument adopts THK precision rolling guide rail imported from Japan, which has high precision, long life, and flexible and convenient operation
- The X and Z coordinates of the instrument adopt a precision grating digital display system. The two coordinates are equipped with fast moving and fine-tuning mechanisms, ball screw drive, high precision, stable performance, flexible and convenient operation, and long life
- The tool clamping of this instrument adopts a vacuum locking mechanism, which is convenient for tool changing and has high versatility; the main shaft is locked mechanically
- The instrument is equipped with a granite countertop floor base, which is beautiful and generous
- This instrument is a three-station turntable vertical multi-station tool pre-adjustment measuring instrument, which can realize one machine with multiple functions, and is an exclusive domestic production product
- The instrument can be equipped with RS232 interface and tool management software to process, store and print the measurement data of the tool under test (optional)



Dasqua Code		1805-1000	1805-1005
Measuring Range	Radial (X) Measuring Range R	300(Φ600)	300(Φ600)
	Axial (Z) Measuring Range L	30-600	30-700
Resolution		0.001mm	
Display System	Magnification Factors	20X	
	Projection Screen Diameter	Φ100	
	Field of View	Φ5	
	Vernier Scale	10'	
Spindle Parameters	Spindle Runout	Radial circular runout ≤ 5μm	
	Spindle Taper	7:24	
	Drive Mode	Manual	
	Number of Holders	3 (40,45,50)	
Repeated Positioning	X	±0.002mm	
Accuracy	Y	±0.002mm	
Instrument Dimensions: (LxWxH)		1150x650x1700mm	1150x650x1900mm

FIVE OPERATING CENTER GLOBALLY

Dasqua[®]

Headquarter in Milano



Mexico



China



India



USA



For complete line of information about Dasqua product,
Please visit our website: www.dasquatools.com

BROTECH